

Pearl Harbor DEC 7, 1941



Photograph taken from a Japanese plane during the torpedo attack on ships moored on both sides of Ford Island.



View looking toward the Pearl Harbor Navy Yard from the Aiea area, in the morning of 7 December 1941, during or soon after the end of the Japanese air raid.



One of the seven Vought SB2U-3 Vindicators destroyed on the field at Ewa during the attack on Pearl Harbor.



Japanese Navy Type 99 Carrier Bomber (Val) in action during the attack.



Japanese Type 00 Carrier Fighter (Zero) that crashed at Fort Kamehameha, near Pearl Harbor, during the attack.



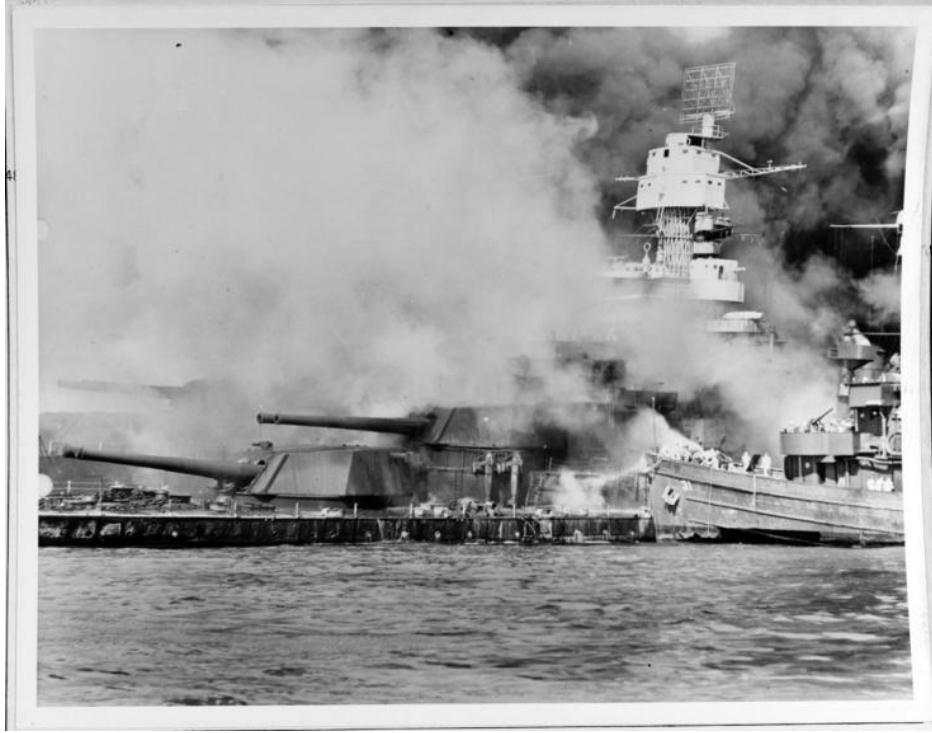
Japanese Type A midget submarine on an eastern Oahu beach, after it went aground following attempts to enter Pearl Harbor during the December 7, 1941 Japanese attack.



A small boat rescues a seaman from the 31,800 ton USS *West Virginia* burning in the foreground. The USS *West Virginia* was struck by the Japanese during the attack on Pearl Harbor.



The forward magazines of USS *Arizona* (BB-39) explodes after she was hit by a Japanese bomb, December 7, 1941. Image clipped from a color motion picture taken from on board USS *Solace* (AH-5).



USS *Tern* (AM-31) fighting fires aboard the sunken USS *West Virginia* (BB-48), on December 7, 1941, immediately after the Japanese raid on Pearl Harbor.



Battleships *West Virginia* (BB-48) (sunken at left) and *Tennessee* (BB-43) shrouded in smoke following the Japanese air raid on Pearl Harbor.



Small craft standing by *West Virginia* (BB-48) as burning oil drifts past the sunken battleship, shortly after the end of the Japanese air raid on Pearl Harbor.



USS Nevada (BB-36) heading down channel, afire from several Japanese bomb hits, as seen from Ford Island during the later part of the attack.



The USS *Arizona* burning after the Japanese attack on Pearl Harbor, December 7, 1941.



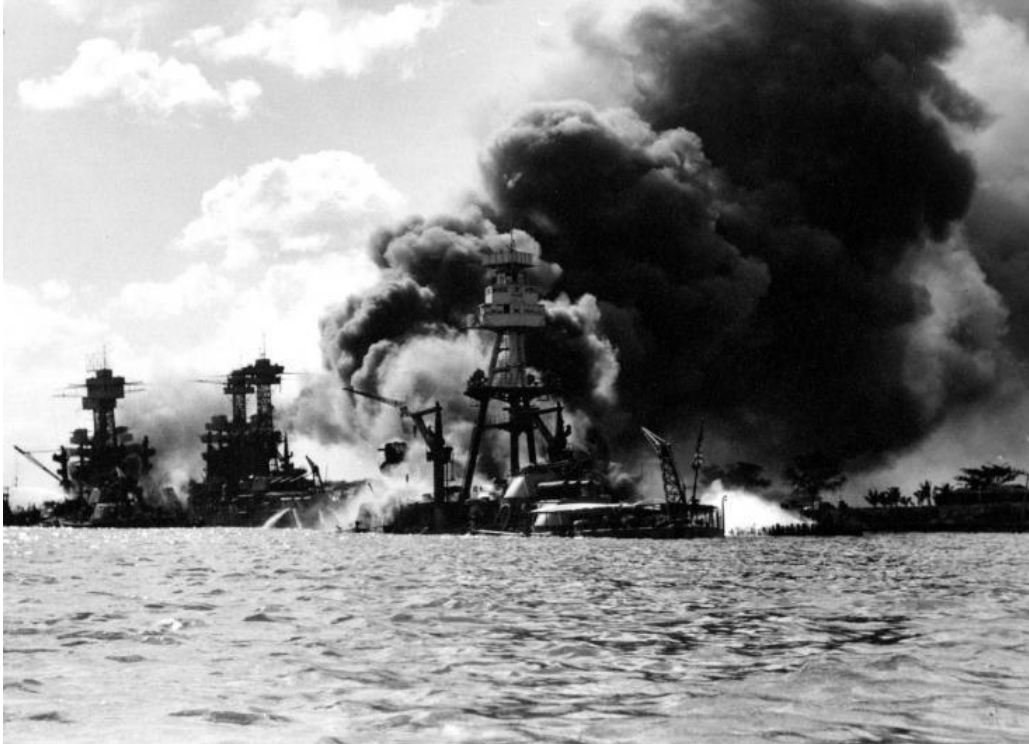
View of Battleship Row from the head of 1010 dock, during or immediately after the Japanese raid on Pearl Harbor.



The scene on the southeastern part of Ford Island, looking northeasterly, with USS *California* (BB-44) in right center, listing to port after being hit by Japanese aerial torpedoes and bombs during the raid on Pearl Harbor.



Crew abandoning the damaged USS *California* (BB-44) as burning oil drifts down on the ship on the morning of December 7, 1941, shortly after the end of the Japanese raid.



View looking up Battleship Row on December 7, 1941, after the Japanese attack.



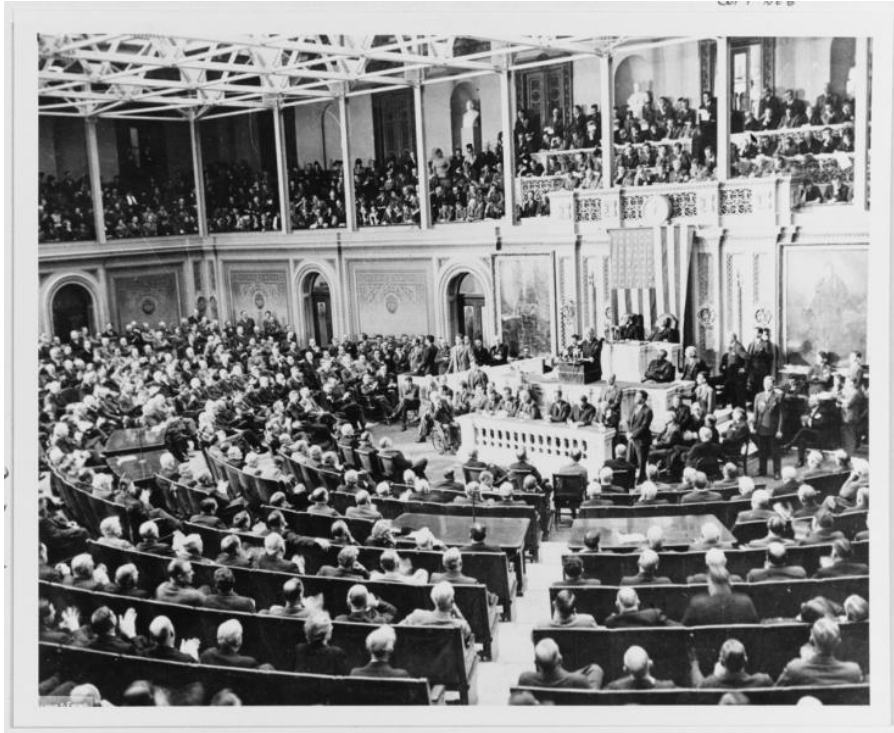
Vertical aerial view of Battleship Row, beside Ford Island, soon after USS *Arizona* was hit by bombs and her forward magazines exploded. Photographed from a Japanese aircraft.



USS *Downes* (DD-375), at left, and USS *Cassin* (DD-372), capsized at right, burned out and sunk in the Pearl Harbor Navy Yard drydock on 7 December 1941, after the Japanese attack.



USS *Phoenix* (CL-46) steams down the channel off Ford Island's Battleship Row, past the sunken and burning USS *West Virginia* (BB-48), at left, and USS *Arizona* (BB-39), at right, December 7, 1941.



Addressing the United States Congress, in a joint session of the Senate and House of Representatives. This photograph has long been identified as the President delivering his war message on December 8, 1941, the day after the Japanese attack on Pearl Harbor.



Aerial view of the wreck of USS *Arizona* (BB-39) in Pearl Harbor, Hawaii, on Memorial Day, May 31, 1958.



Aerial view of the hull of the U.S. Navy battleship USS *Arizona* (BB-39) taken during the 1950s prior to the construction of the USS Arizona Memorial.